



A CLEAR VIEW

To fulfill this directive, a craft must be on the lower space of the track tile.

The philosopher Friedrich Wilhelm Nietzsche once wrote that if you stare into the abyss long enough, the abyss will stare back at you.

There is no greater abyss than the vast interstellar emptiness. The distance to even the nearest star seems insurmountable.

But the common Squeak probably thought the same about our Moon only a century ago.

Today, though, we can only stare again.

And take very detailed measurements and readings using squeakmade equipment farther away from home than anything else before it.

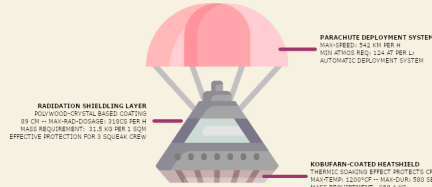


CHALLENGES

To fulfill this directive, a craft must move over any transition requiring at least one or , except the transition connecting Tree's orbit with the Moon.

To enable further exploration of our solar system, a large number of technical challenges must be overcome. We will face extreme temperatures, dangerously high radiation levels and a great many other perils.

Developing solutions to counter these dangers is a paramount goal for our space program.



AEROSTAT

When this directive comes into play:

Flip the special part card, then place the now visible objective marker below any planetary tile with a gas giant (a big planet without a transition), preferring tiles without outposts.

While this directive is in play:

All orbit spaces on the marked tile now have a new transition connected to that tile's gas giant with costs . The gas giant has a and is explored, showing .

If the directive is fulfilled, failed or it is impossible to fulfill it, the **game ends**. To fulfill it, the gas giant must have an outpost.



We just got the go-ahead for the aerostat-project! Just imagine it, a flying city-dre carried aloft by buoyant gas and forever floating among the clouds.

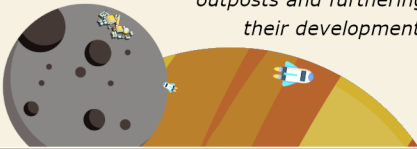


CLOSE BY

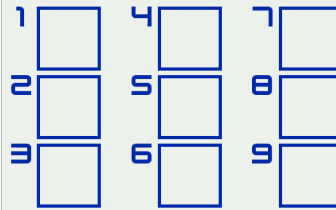
To fulfill this directive, there must either be a single planetary tile of the outer solar system which has two outposts on it or fulfilling the former condition must be impossible due to component limitations when this card is drawn.

It is said the forest endures while the lone tree is set aflame by the lightning.

The continued success of the United Forests Space Program will eventually result in our outposts expanding into full off-world colonies. If located close to each other, these colonies could be connected by fuel-efficient shuttles, thus enabling mutual aid between such outposts and furthering their development.



INSTALLATIONS



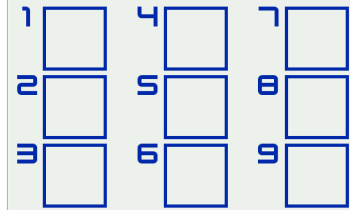
OUTPOST ELDER



DEPOT

NOT A COMPONENT

INSTALLATIONS



OUTPOST GINKGO



DEPOT

NOT A COMPONENT



2
CANNOT BE BUILT IF A TRANSITION EXISTS
WHEN ON CRAFT:
> PROVIDES FIETOPTOPES



FIETOPE-CHARGED BEAM POWER ARRAY
ONCE PER MOVE, CRAFT ON THIS TILE CAN TREAT A AS A



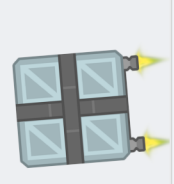
1
CANNOT BE BUILT IF THIS LOCATION LACKS ANY DISCOVERY



RESEARCH LABORATORY
UPGRADE KNOWN PARTS MATCHING THIS OUTPOST FOR COST 4



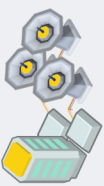
1
WHILE IN ORBIT: YOU MAY DISCARD THIS PART TO IMMEDIATELY TRANSFER FUEL AND / OR (OTHER) PARTS FROM THIS ENTITY TO ONE ON THE ORBITED CELESTIAL OBJECT



ATTACHABLE BRAKING THRUSTER (SINGLE-USE)



2
CANNOT BE BUILT IF A TRANSITION EXISTS
WHEN ON CRAFT:
> PROVIDES LUMBGEN



LUMBGEN-CHARGED BEAM POWER ARRAY
ONCE PER MOVE, CRAFT ON THIS TILE CAN TREAT A AS A



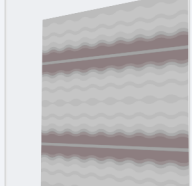
1
IF CONVERTING DEPOT TO AN OUTPOST BY BUILDING THIS PART: DISCARDED CRAFT MUST BE UNCREWED



SELF-CONSTRUCTING AUTOMATED OUTPOST
NO BOON



2
IF PART'S IS USED, DISCARD THE PART AFTERWARDS



MARBLEMBER HEAVY HULL ARMOR

DIRECTIVE FULFILLED

ACT VI: EPILOGUE

(USE ONLY ONE CARD)

DIRECTIVE FAILED

DIRECTIVE FULFILLED

ACT I: EXPLORATION

DIRECTIVE FAILED

DIRECTIVE FULFILLED

ACT III: EXPANSION

DIRECTIVE FAILED

DEPOT
GINKGO

1	4	7
2	5	8
3	6	9

DEPOT

DEPOT
ELDER

1	4	7
2	5	8
3	6	9

DEPOT

DIRECTIVE FULFILLED

ACT V: INTERPLANETARY

DIRECTIVE FAILED

EQUIPMENT

WHILE IN ORBIT:
YOU MAY DISCARD THIS PART TO IMMEDIATELY TRANSFER FUEL AND / OR (OTHER) PARTS FROM THIS ENTITY TO ONE ON THE ORBITED CELESTIAL OBJECT

INFLAFORM-ENCASED
CARGO CONTAINER

ADV. PART

INSTALLATION

CANNOT BE BUILT IF THIS LOCATION LACKS ANY DISCOVERY

OFF-WORLD
RESEARCH HUB

ADV. PART

UPGRADE KNOWN PARTS MATCHING THIS OUTPOST AT NO COST

INSTALLATION

WHEN ON CRAFT:
> PROVIDES FIEPOTYPES

FIEPOTOPE-CHARGED
POWER PROJECTOR

ADV. PART

ONCE PER MOVE, CRAFT ON THIS OR NEIGHBORING TILES CAN TREAT AS

SUPPORT

IF PART'S IS USED, DISCARD THE PART AFTERWARDS

MARBLETIMMER
HULL COATING

ADV. PART

(RAD-SHIELD)

INSTALLATION

IF CONVERTING DEPOT TO AN OUTPOST BY BUILDING THIS PART: DISCARDED CRAFT MUST BE UNCREWED

VON NEUSQUEAK
CONSTRUCTION SWARM

ADV. PART

NO BOON

INSTALLATION

WHEN ON CRAFT:
> PROVIDES LUMBODEN

LUMBODEN-CHARGED
POWER PROJECTOR

ADV. PART

ONCE PER MOVE, CRAFT ON THIS OR NEIGHBORING TILES CAN TREAT AS